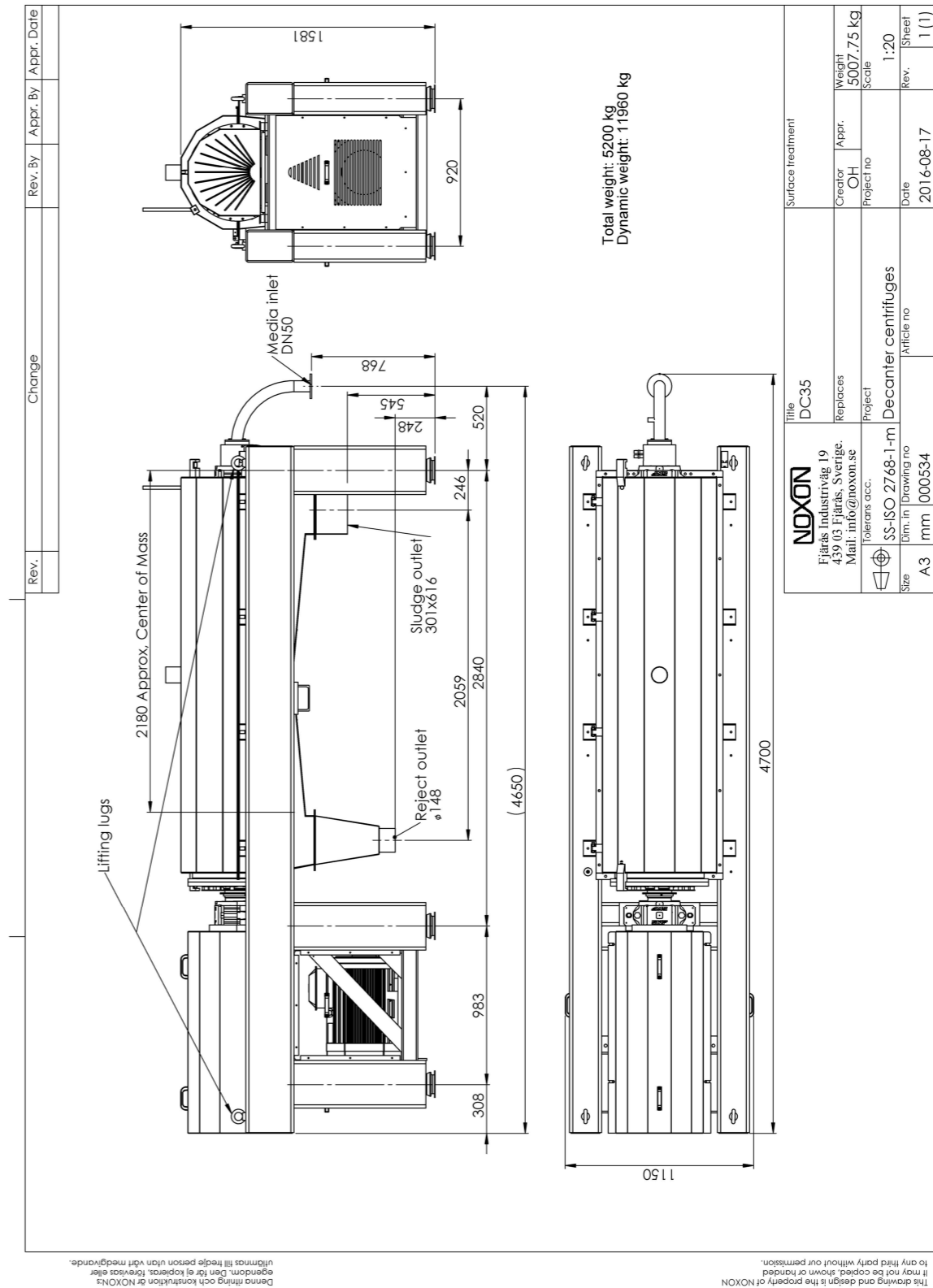


TECHNICAL DATA DC35

Volume capacity. The rating varies owing to the sludge type	8-55 m³/h
Max dry solid/hour	250 – 1100krTS/h
Drum diameter	531mm
Rotor length	2298 mm
Cylindrical rotor length	1656 mm
Max. Clarification area	2.2 m²
Max. Hydraulic volume	317 lit.
Max g-force	2004 m/s²
Max rotation	2600 rpm
Sound level (distance 1 m open air)	82 dB(A)
Material, centrifuge	Standard: Carbon steel, epoxy painted Option: stainless steel
Material, fastening elements	Stainless steel
Wear protection, screw	Wolfram carbide
Lubrication bearings	Grease

The centrifuge is tested in our workshop before delivery. A test certificate is filled in, which also includes details of vibration and sound level.

We reserve the right to make any technical changes without prior notice.



Noxon AB, Box 53, Fjärås Industriväg 19, SE-439 03 Fjärås, Sweden

Tel: +46 (0)300 55 440 \ Fax: +46 (0)300 55 449 \ E-mail: info@noxon.se \ www.noxon.se

Organisationsnr: 556828-0670 \ VAT-nr: SE556828067001